

# Comparison of SPA, FTIR, GC Measurements of Tars from a Test-Gas Generator

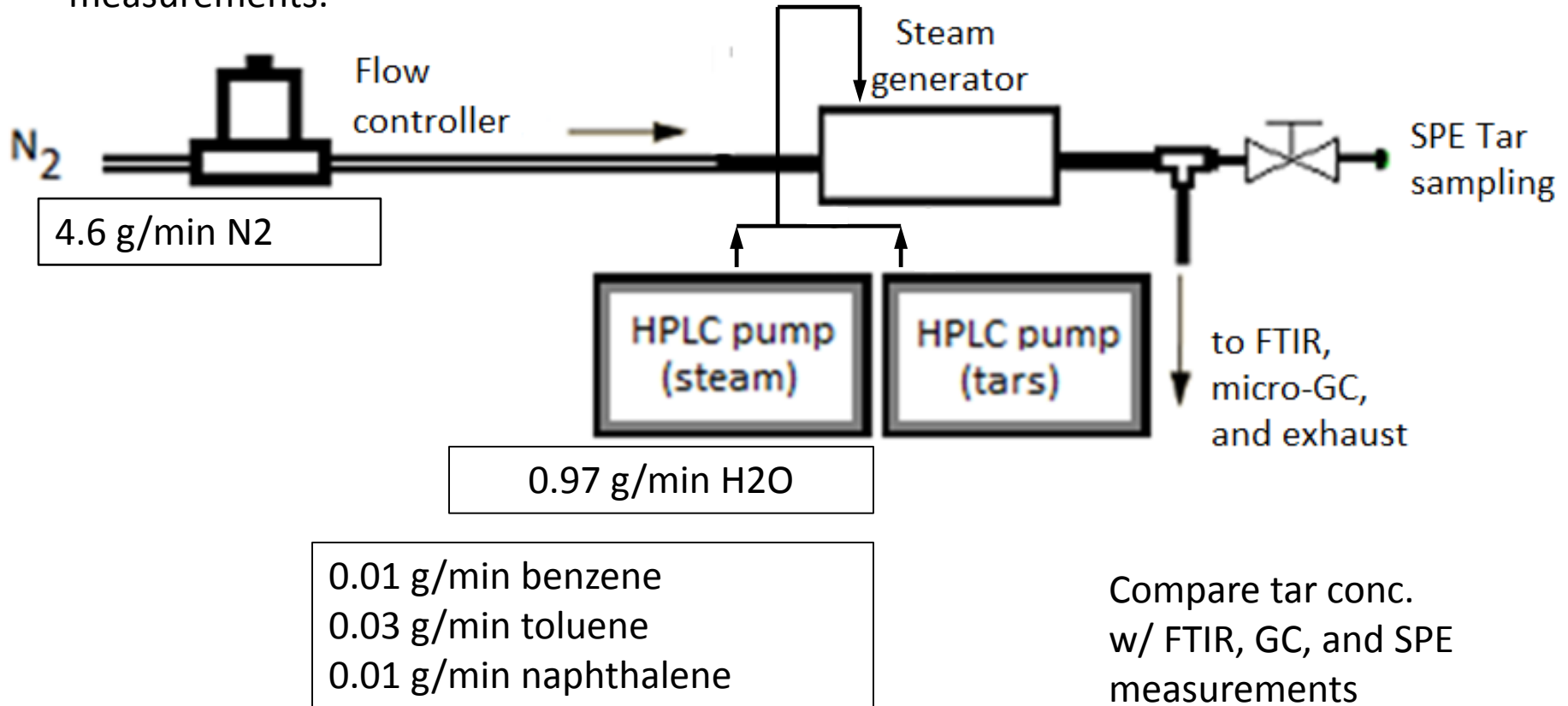
Reinhard Seiser

UC San Diego

June 5<sup>th</sup>, 2015

# Test-Gas Generator

Experimental setup to test accuracy and repeatability of SPE method for tar measurements.

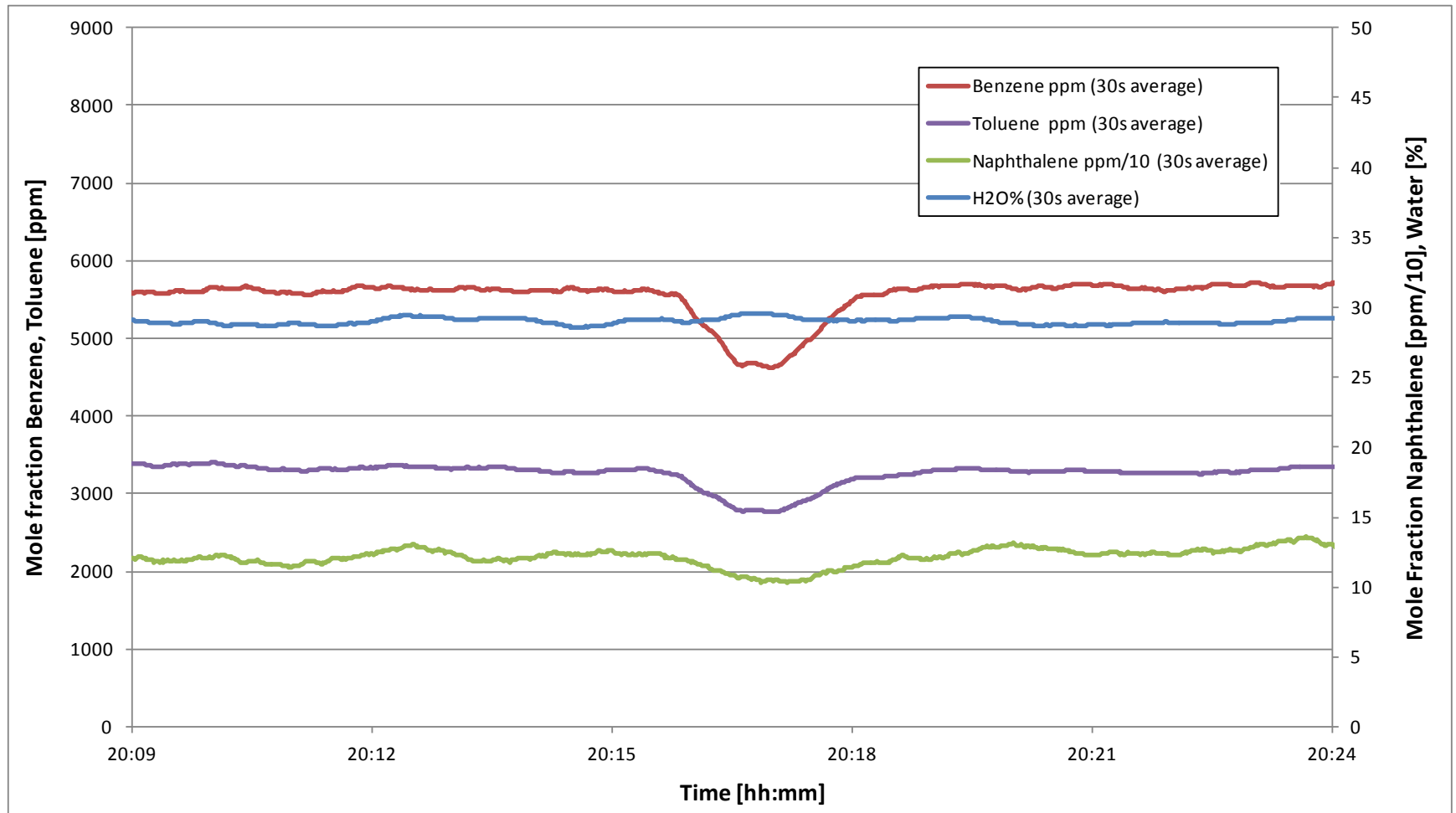


# Test-Gas Generator

- Used for tar/steam mixture
- Tar mixture needs to be liquid at room temperature (HPLC pump). E.g. mixture of Benzene, Toluene, Xylene, Naphthalene, Acenaphthylene, Acenaphthene



# Need to Verify Performance Online (e.g. FTIR)



# Test Tars Measured by Scale, FTIR, $\mu$ GC, and SPE

